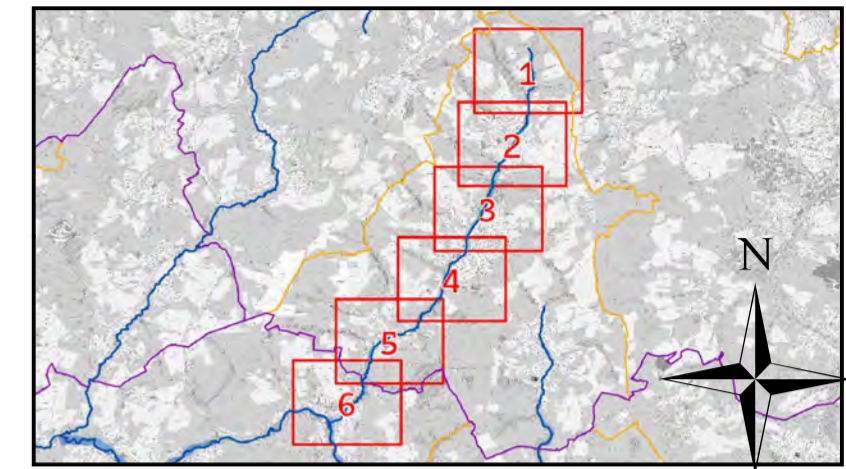


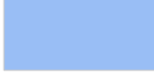


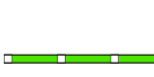
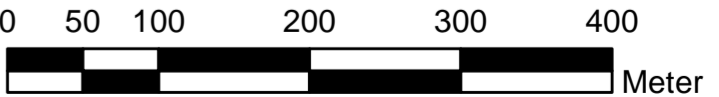


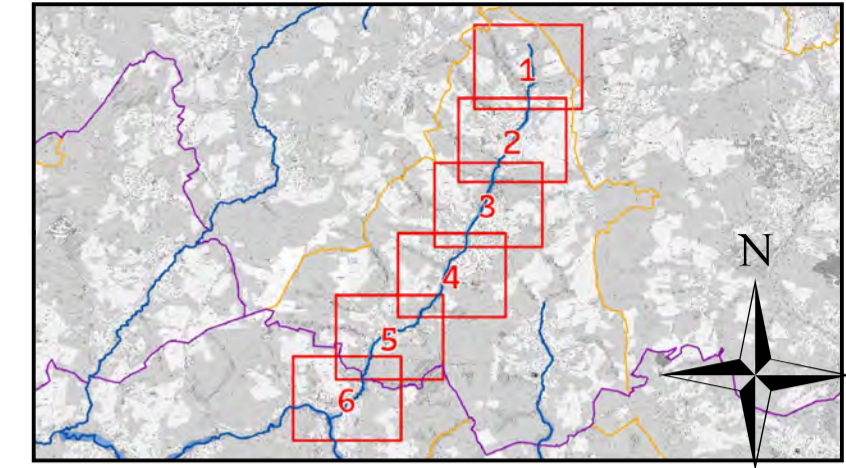
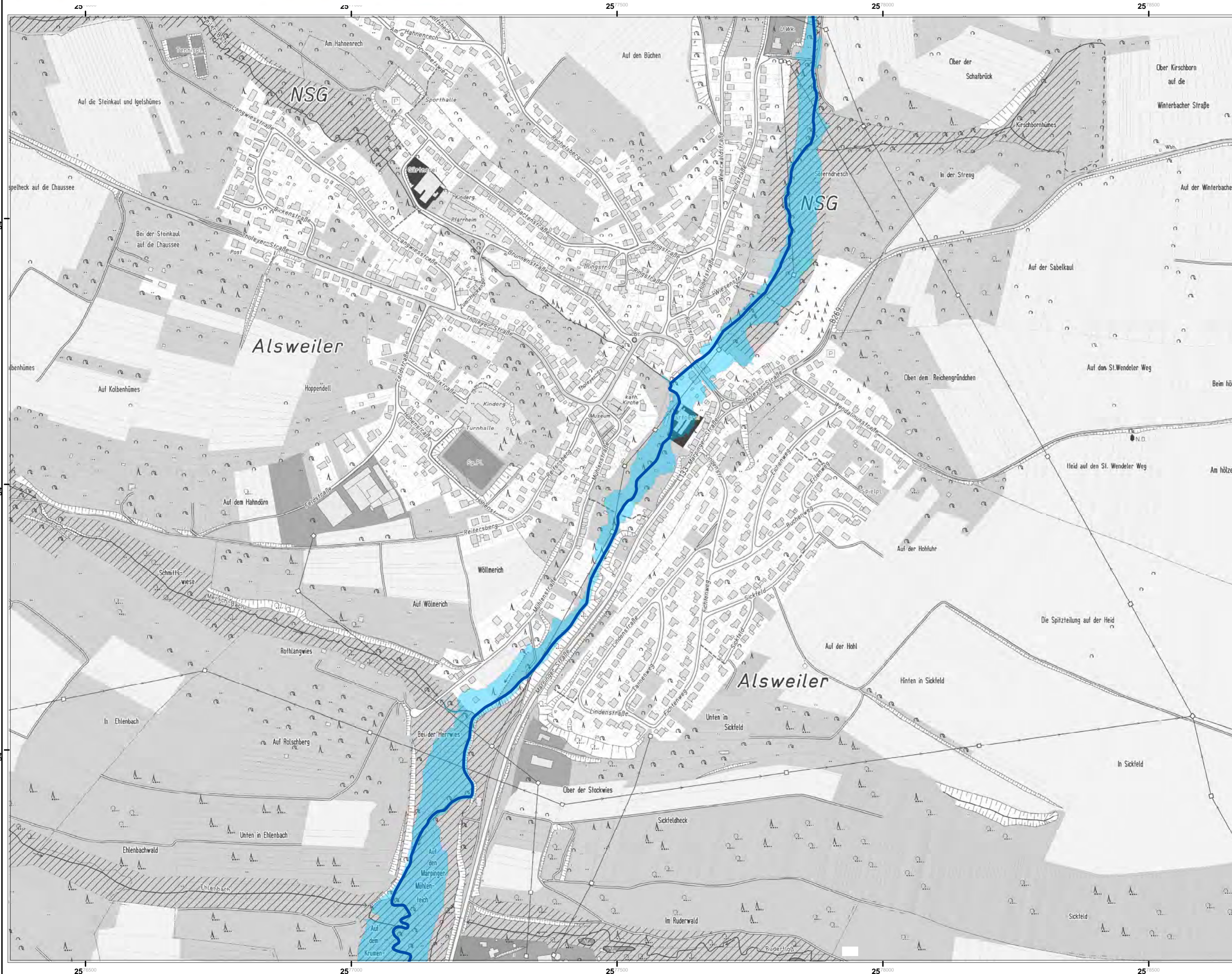
Überschwemmungsgebiet (ÜSG) HQ100 - Als-Bach



Legende

-  Hochwasserrisikogewässer
-  ÜSG_HQ100_Als-Bach
-  ÜSG_HQ100_Nebengewässer/Vorfluter
-  Landkreise
-  Kommunen
-  Hochwasserschutzanlagen

| | | |
|---|------------|-------|
| Maßstab | Stand | Blatt |
| 1:5.000 | 01.10.2021 | 1/6 |
|  | | |
| Kartografie: J. Kiehn, K. Schmidt, Landesamt für Umwelt- und Arbeitsschutz Datengrundlage: Geodatenzentrum des Saarlandes | | |



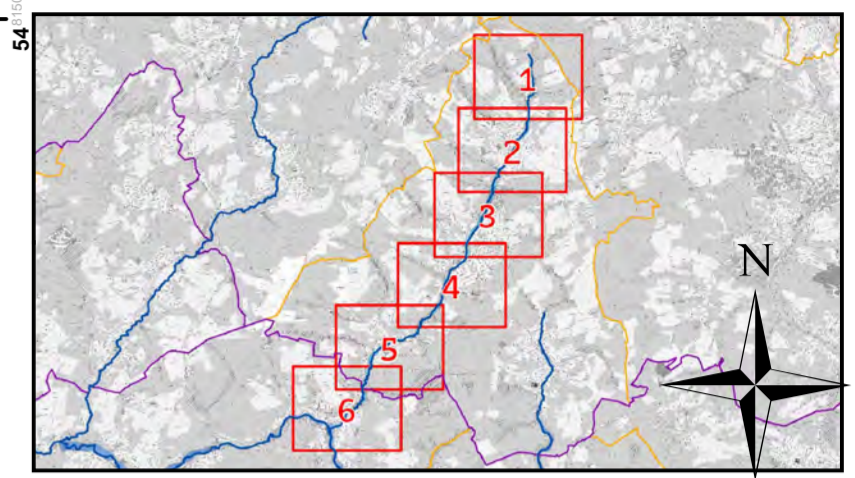
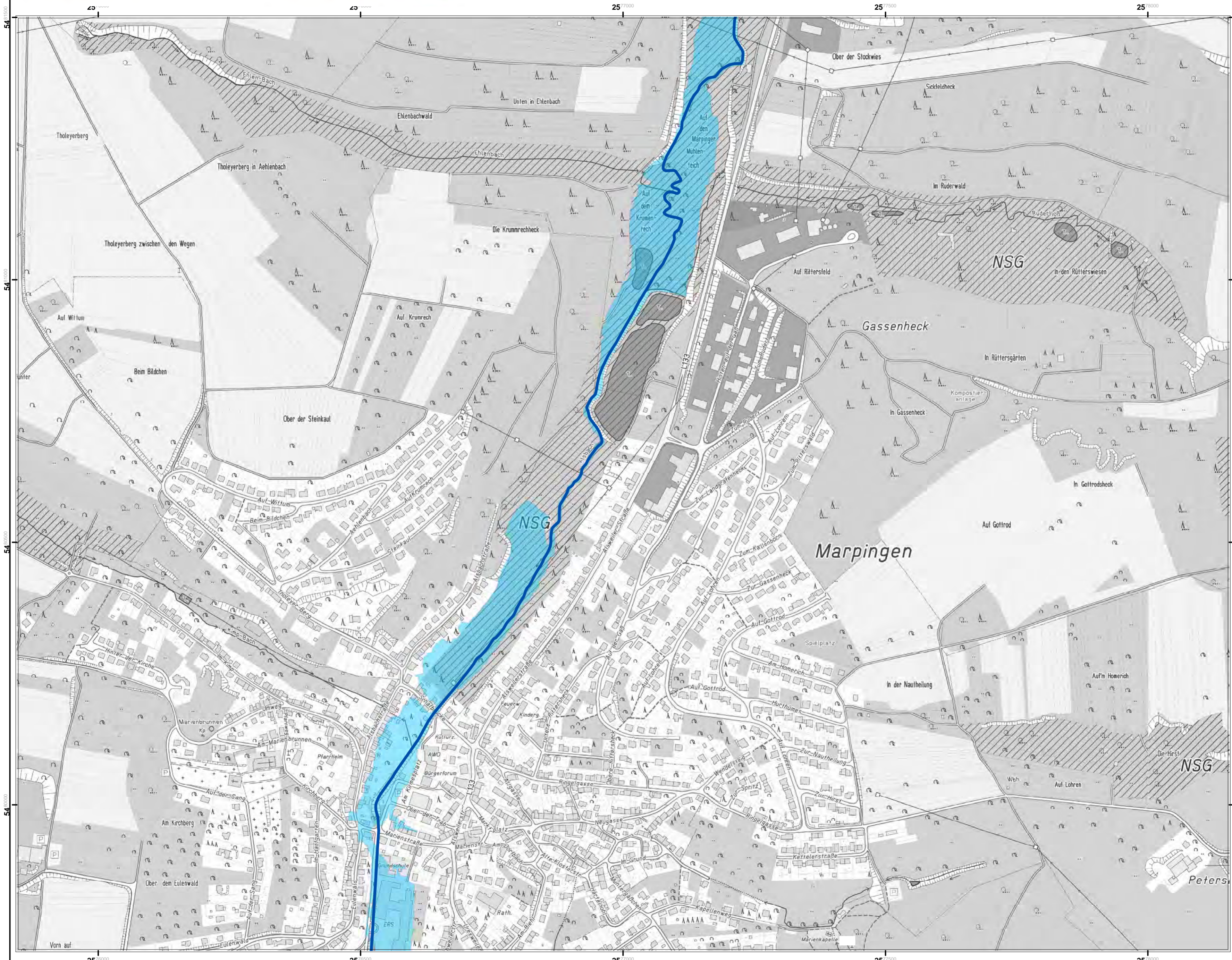
Legende

- Hochwasserrisikogewässer
- ÜSG_HQ100_Als-Bach
- ÜSG_HQ100_Nebengewässer/Vorfluter
- Landkreise
- Kommunen
- Hochwasserschutzanlagen







| | | |
|---------|------------|-------|
| Maßstab | Stand | Blatt |
| 1:5.000 | 01.10.2021 | 2/6 |

Meter

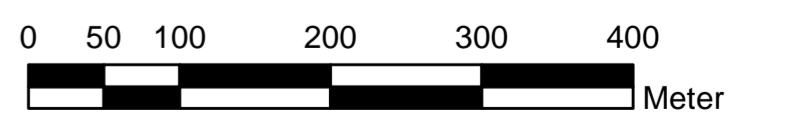
Kartografie:
J. Kiehn, K. Schmidt, Landesamt für Umwelt- und Arbeitsschutz
Datengrundlage: Geodatenzentrum des Saarlandes



Legende

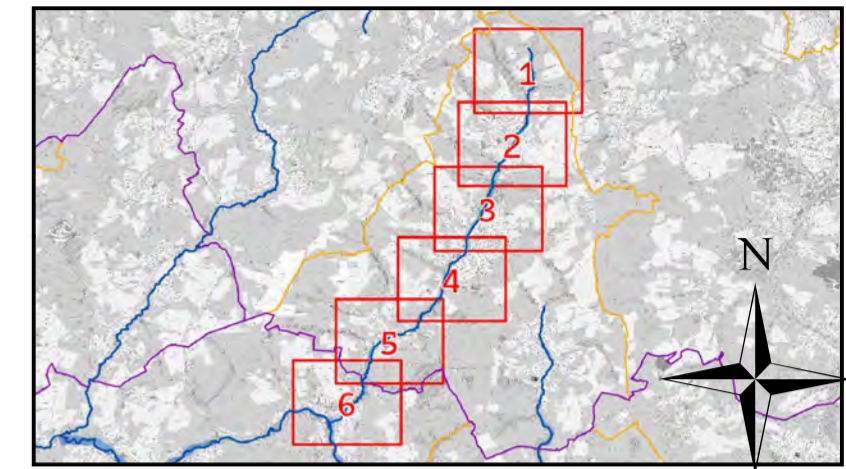
-  Hochwasserrisikogewässer
-  ÜSG_HQ100_Als-Bach
-  ÜSG_HQ100_Nebengewässer/Vorfluter
-  Landkreise
-  Kommunen
-  Hochwasserschutzanlagen

| | | |
|---------|------------|-------|
| Maßstab | Stand | Blatt |
| 1:5.000 | 01.10.2021 | 3/6 |



0 50 100 200 300 400 Meter

Kartografie:
J. Kiehn, K. Schmidt, Landesamt für Umwelt- und Arbeitsschutz
Datengrundlage: Geozentrum des Saarlandes



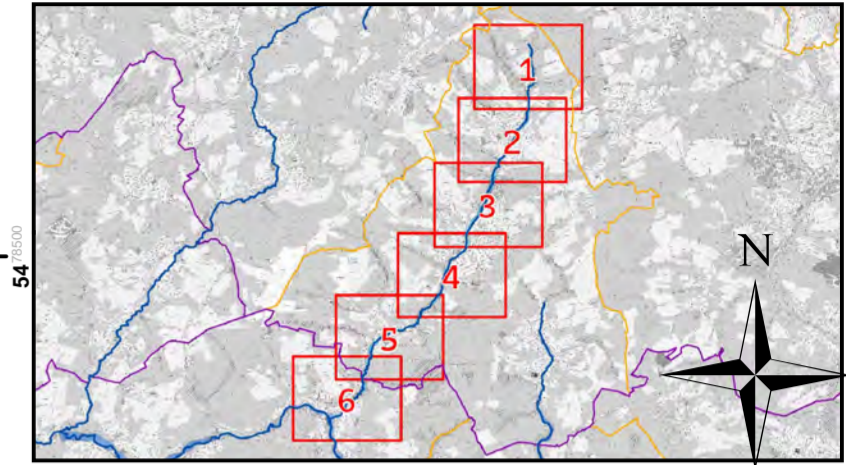
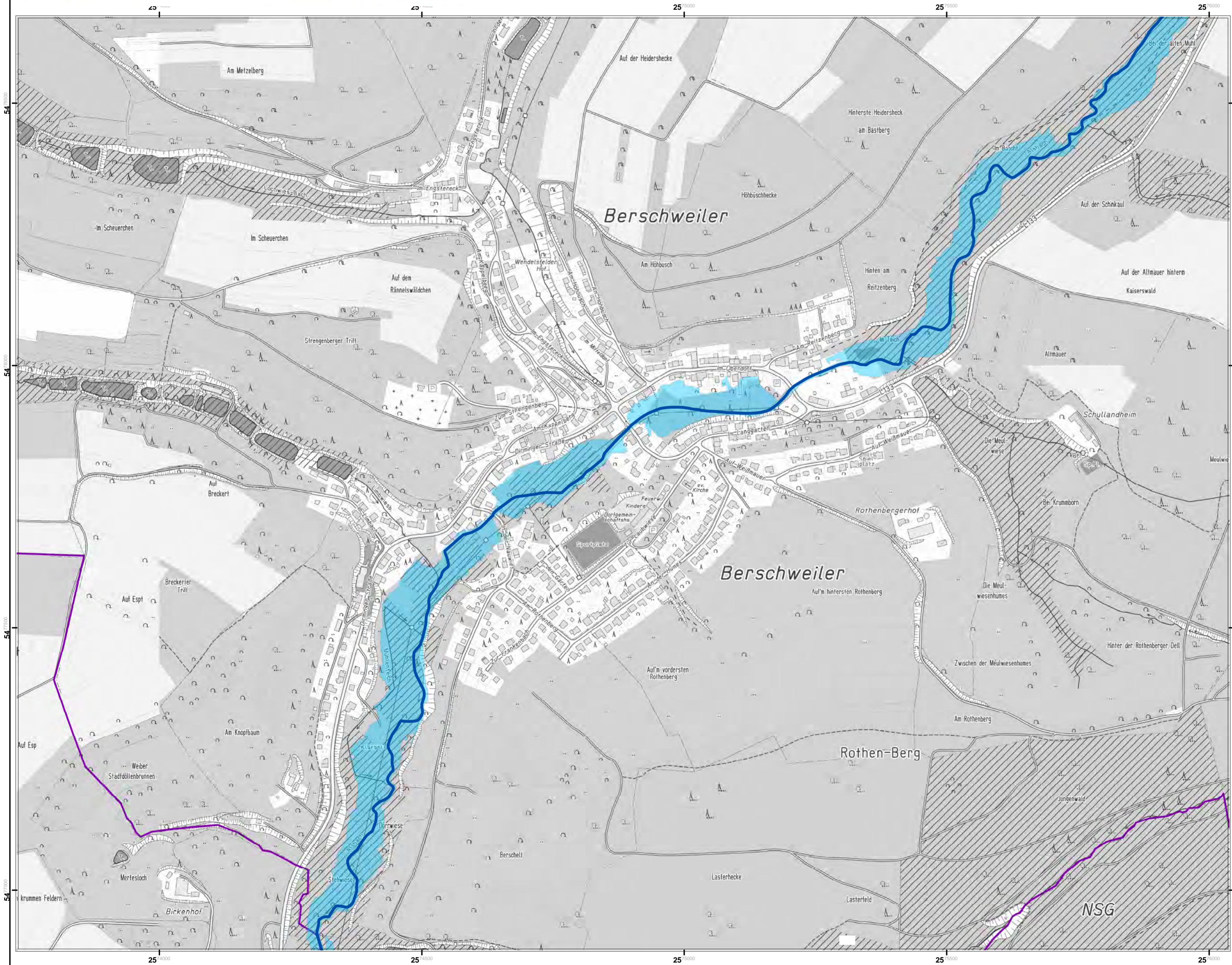
Legende

- Hochwasserrisikogewässer
- ÜSG_HQ100_Als-Bach
- ÜSG_HQ100_Nebengewässer/Vorfluter
- Landkreise
- Kommunen
- Hochwasserschutzanlagen


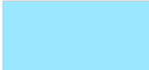




| | | |
|---------|------------|-------|
| Maßstab | Stand | Blatt |
| 1:5.000 | 01.10.2021 | 4/6 |

Meter

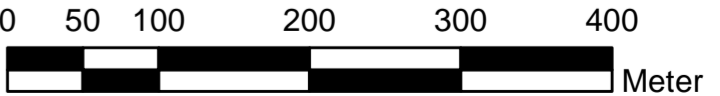
Kartografie:
J. Kiehn, K. Schmidt, Landesamt für Umwelt- und Arbeitsschutz
Datengrundlage: Geozentrum des Saarlandes



Legende

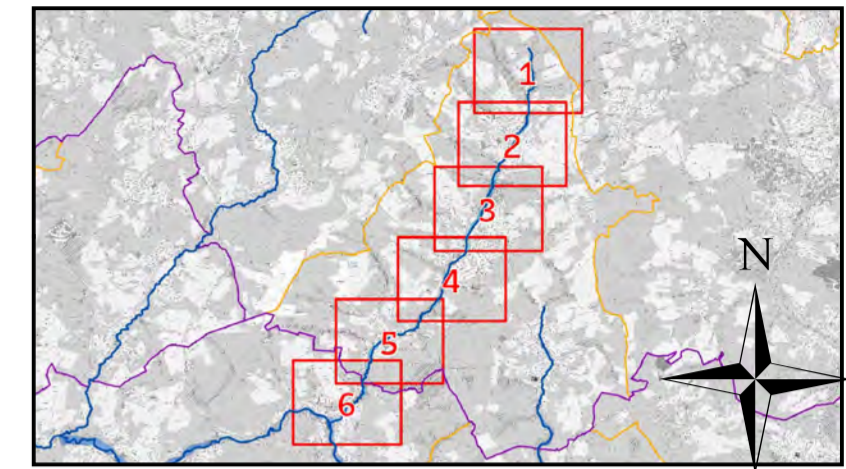
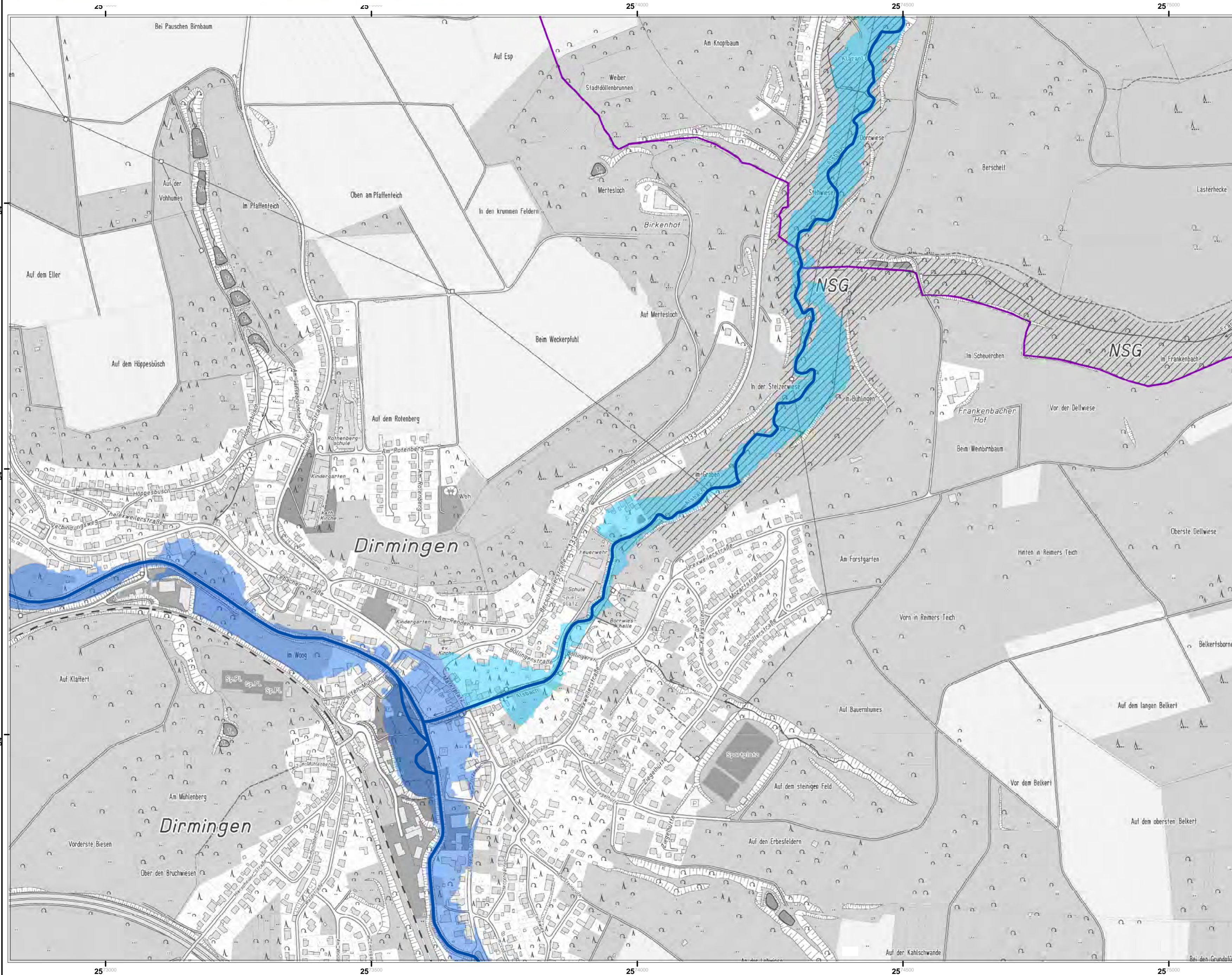
-  Hochwasserrisikogewässer
-  ÜSG_HQ100_Als-Bach
-  ÜSG_HQ100_Nebengewässer/Vorfluter
-  Landkreise
-  Kommunen
-  Hochwasserschutzanlagen

| | | |
|---------|------------|-------|
| Maßstab | Stand | Blatt |
| 1:5.000 | 01.10.2021 | 5/6 |


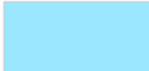






0 50 100 200 300 400 Meter

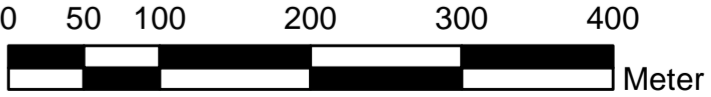
Kartografie:
J. Kiehn, K. Schmidt, Landesamt für Umwelt- und Arbeitsschutz
Datengrundlage: Geozentrum des Saarlandes



Legende

-  Hochwasserrisikogewässer
-  ÜSG_HQ100_Als-Bach
-  ÜSG_HQ100_Nebengewässer/Vorfluter
-  Landkreise
-  Kommunen
-  Hochwasserschutzanlagen

| Maßstab | Stand | Blatt |
|---------|------------|-------|
| 1:5.000 | 01.10.2021 | 6/6 |



0 50 100 200 300 400 Meter

Kartografie:
J. Kiehn, K. Schmidt, Landesamt für Umwelt- und Arbeitsschutz
Datengrundlage: Geodatenzentrum des Saarlandes